

E- MOBILITY

LIGHTS ASSEMBLY INSTRUCTIONS

Edition: 05/2022

Produced by:
DUESSE SERVICE srl
Samarate (VA)
www.duesse.it

in behalf of:
e-MV Agusta S.r.l.
Legal residence: via Vittorio Veneto, 11 - 21100 VARESE
Headquarter: Via Caronaccio, 69 - 21040 Morazzone (Va) ITALY

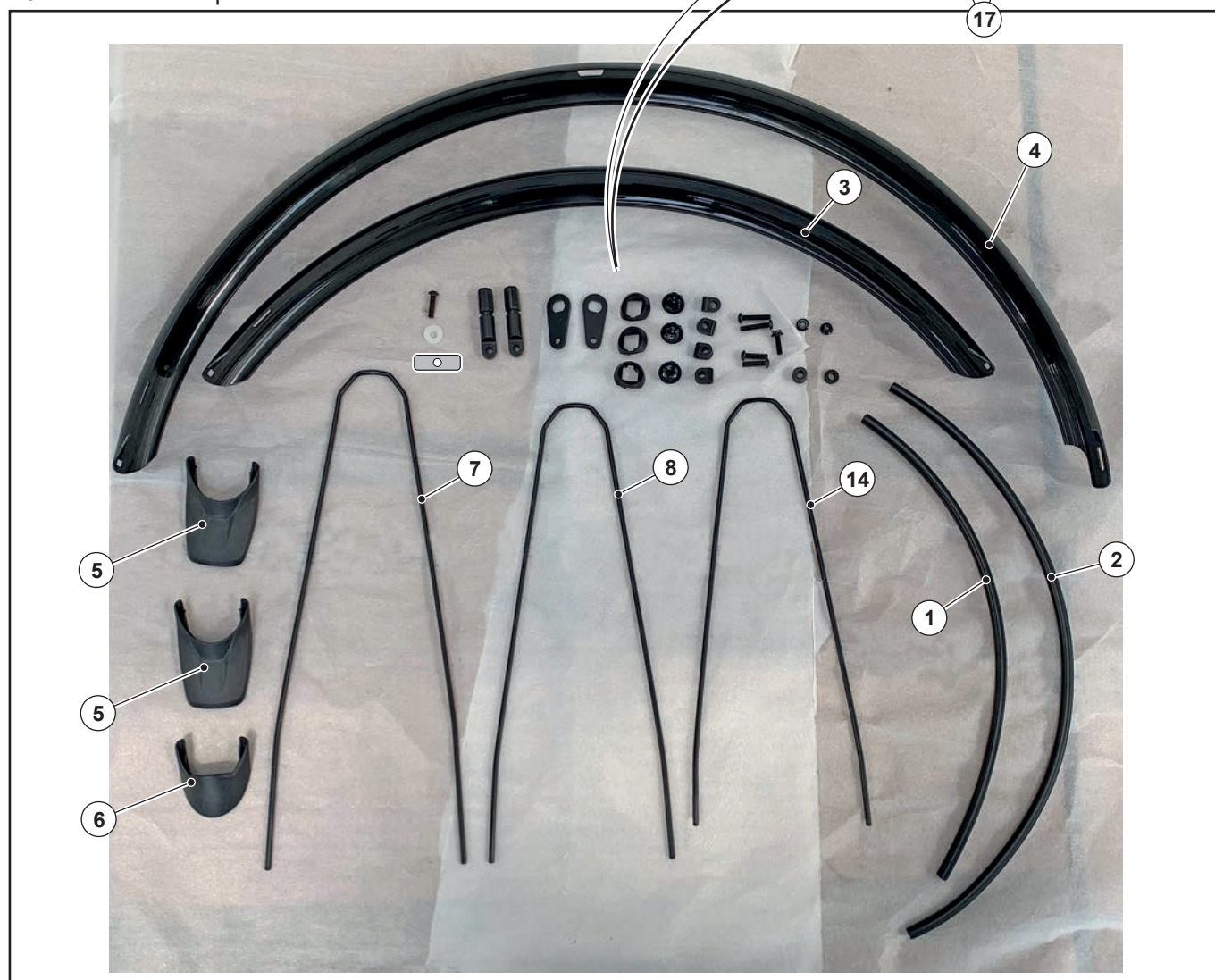
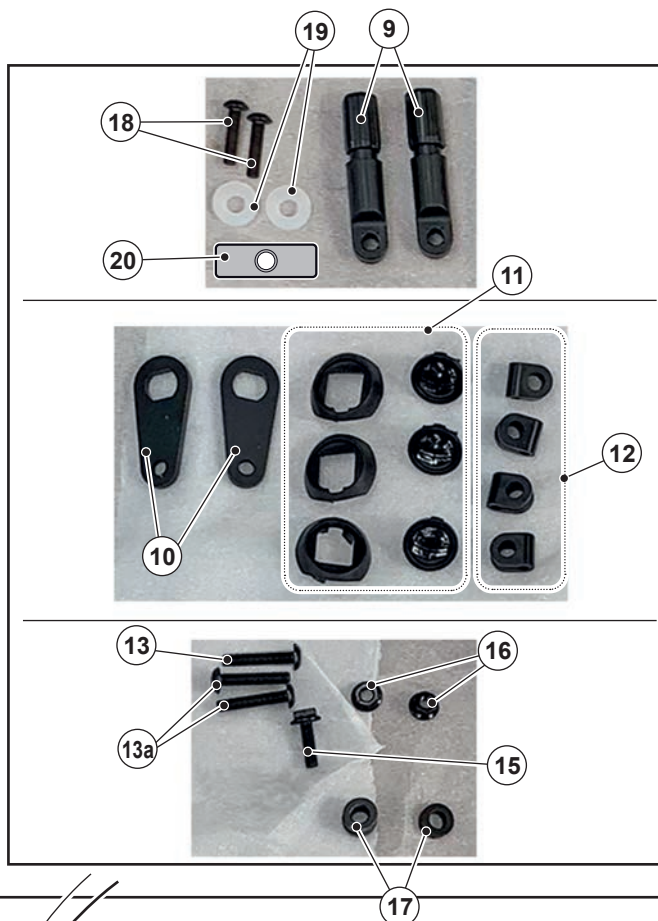
MAIN INDEX

1.1 -	COMPOSITION OF THE KIT	4
1.1.a -	Mudguards kit	4
1.1.b -	Lights kit.....	5
1.1.c -	Baggage holder kit	5
1.2 -	ASSEMBLY PROCEDURE	6

1.1 - COMPOSITION OF THE KIT

1.1.a - Mudguards Kit

- 1 - Short adhesive sheath n°1
(normally already assembled)
- 2 - Long adhesive sheath n°1
(normally already assembled)
- 3 - Front mudguard n°1
- 4 - Rear mudguard n°1
- 5 - Long spray guard n°2
- 6 - Short spray guard n°1
- 7 - Long rod support (rear) n°1
- 8 - Short rod support (rear) n°1
- 9 - Adjustable support n°2
- 10 - Rear mudguard fixing plates n°2
- 11 - Rod support retainer n°3
- 12 - Rods fixing plate n°4
- 13 - Mudguard clamping screw n°1 (M5 x 25)
- 13a - Mudguard clamping screw n°2 (M5 x 30)
- 14 - Rod support (front) n°1
- 15 - Rear mudguard clamping screw n°1 (M5 x 16)
- 16 - Flange nut n°2
- 17 - Spacer n°2
- 18 - Front mudguard clamping screw n°2 (M5 x 20)
- 19 - Teflon washer n°2
- 20 - Small steel plate n°1

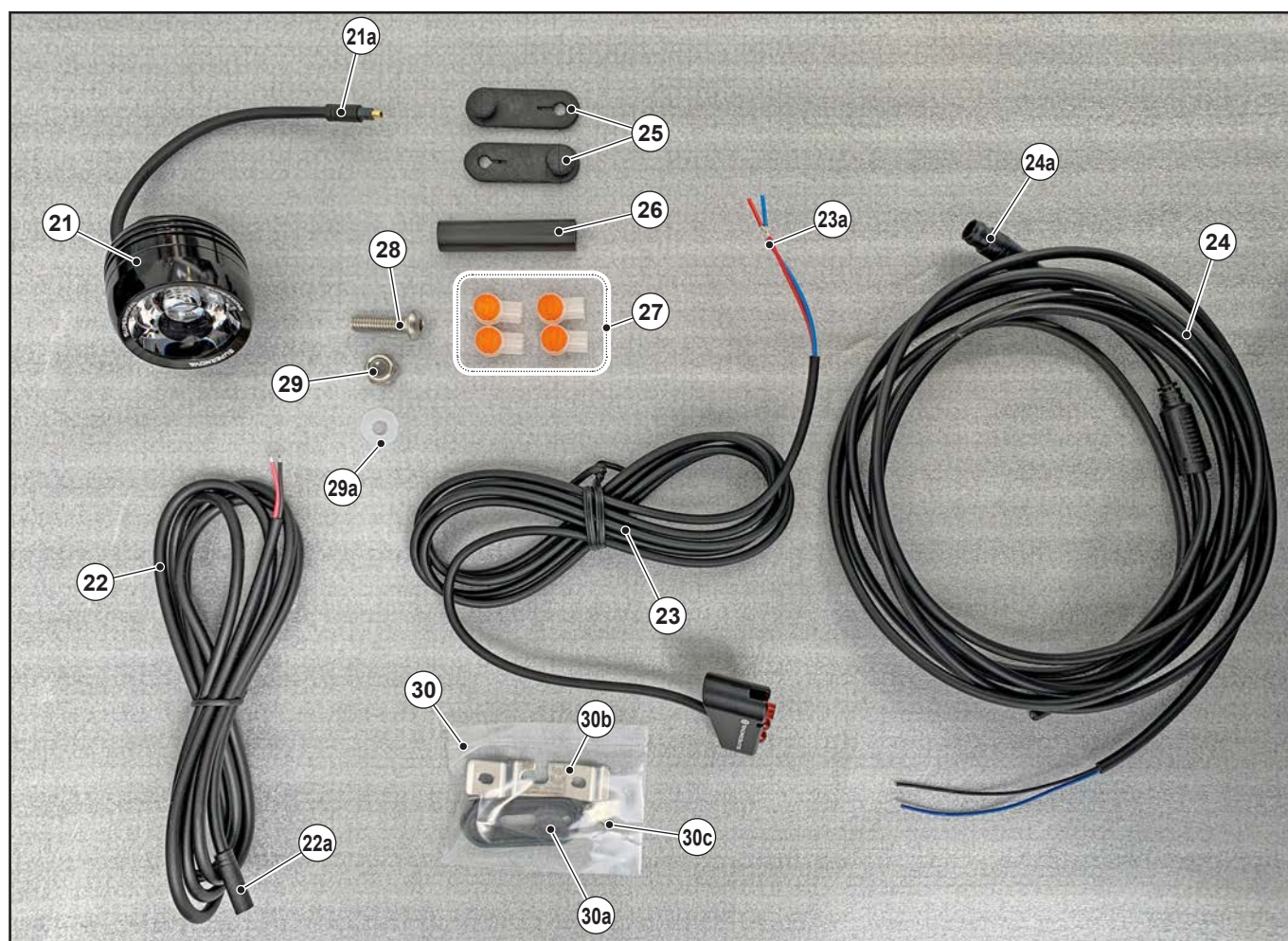
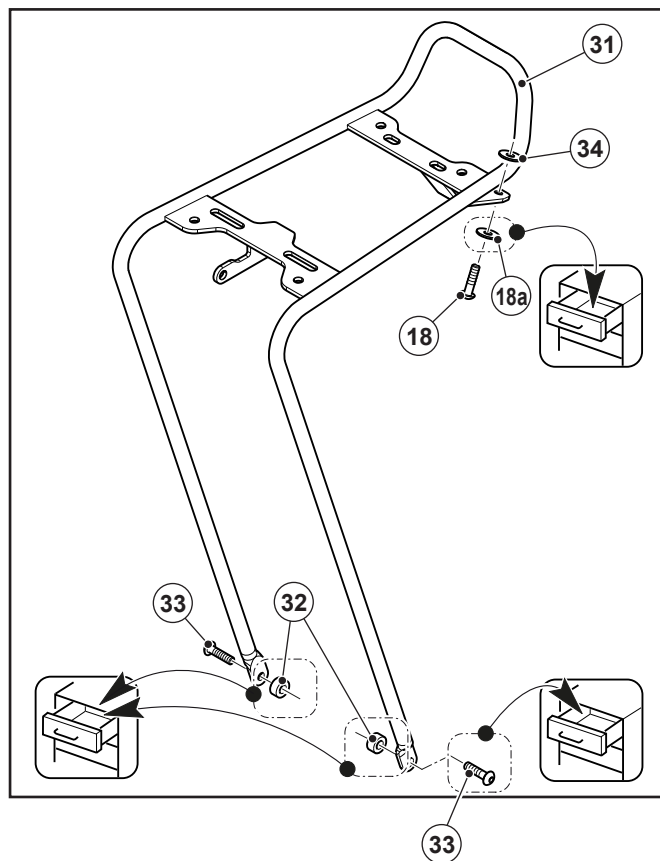


1.1.b - Lights Kit

- 21 - Front light n°1
- 22 - Front light connection extension n°1
- 23 - Rear light n°1
- 24 - Lights battery interface extension n°1
- 25 - Rubber straps n°2
- 26 - Wire sheath (if basket present only) n°1
- 27 - Electric wire splice connector n°4
- 28 - Light clamping screw n°1
- 29 - Light clamping nut n°1
- 29a - Washer
- 30a - Rear light grommet n°1
- 30b - Rear light fixing bracket n°1
- 30c - Rear light clamping screw n°1

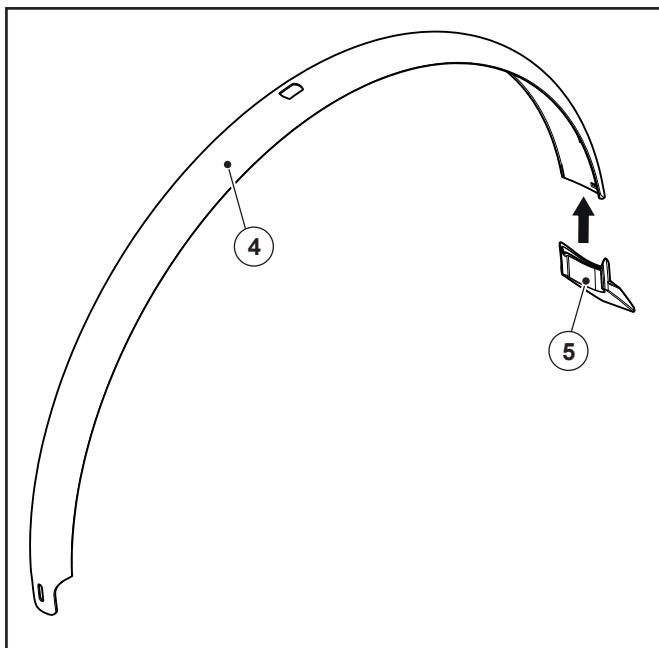
1.1.c - Baggage holder Kit

- 18 - Front mudguard clamping screw n°1 (M5 x 20)
(do not use)
- 18a - Washer
- 31 - Baggage holder
- 32 - Spacer n°2 (do not use)
- 33 - Baggage holder clamping screw n°2 (M5x20)
(do not use)
- 34 - Teflon washer n°2

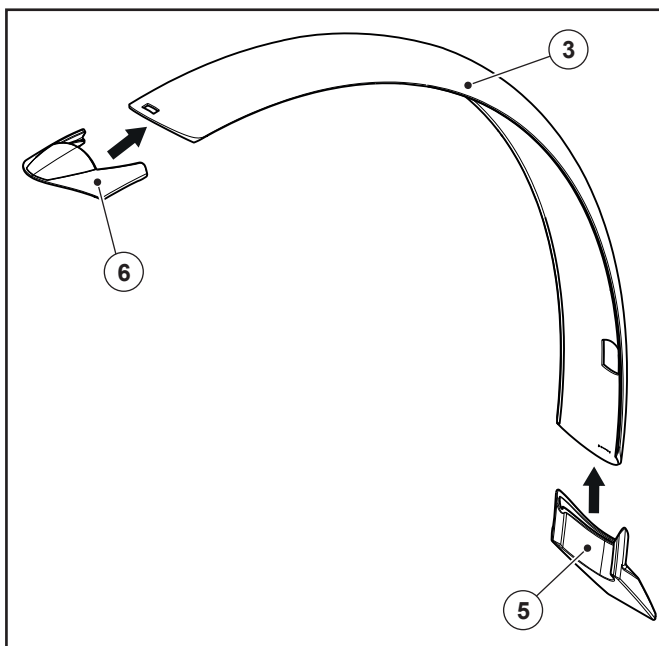


1.2 - ASSEMBLY PROCEDURE

- Insert the spray guard (5) onto the rear mudguard (4).



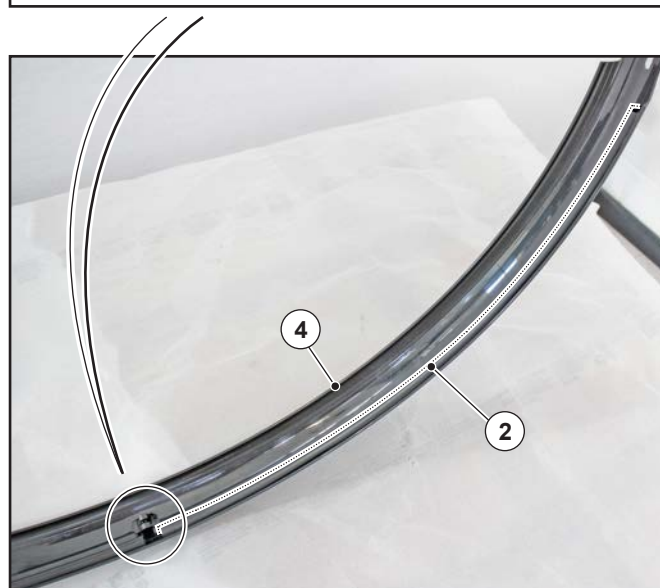
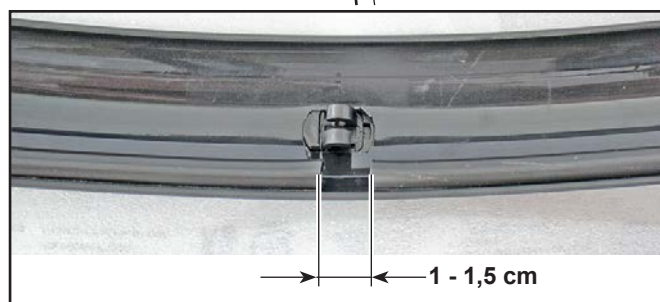
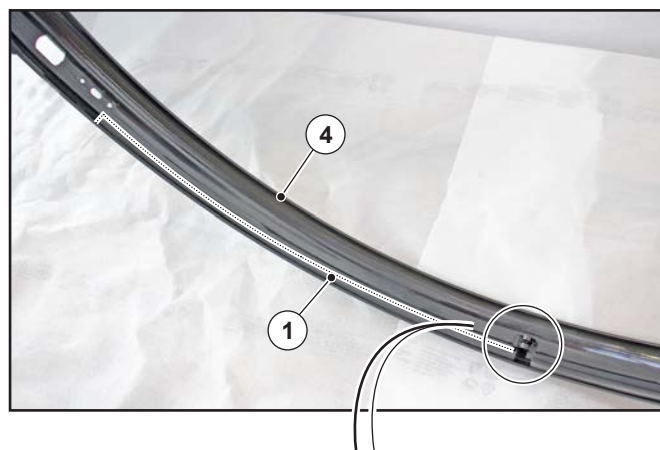
- Insert the spray guard (5) onto one end of the front mudguard (3) and the spray guard (6) onto the other end.



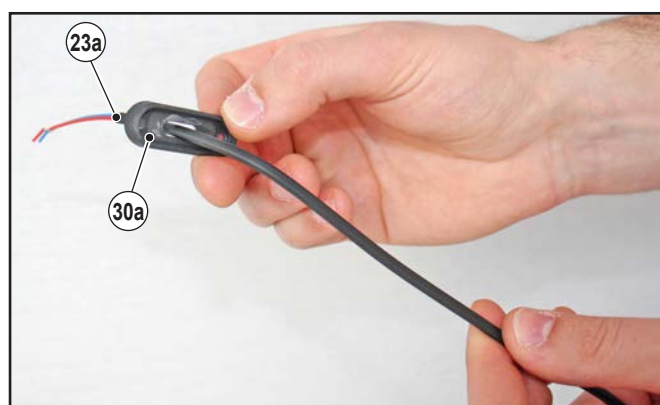
- If the sheaths (1) and (2) are not assembled on the rear mudguard, operate as follows:

- remove the protection from the adhesive and assemble the short sheath (1) on the rear mudguard (left side) (4) light side, and the long sheath (2) on the mudguard (left side), frame side.

It is important to start with the sheaths from the centre of the mudguard and run towards the ends, leaving a space of approx. 1-1.5 cm at the centre between the two sheaths.



- Insert the rear light cable (23a) into the grommet (30a).



- Insert the terminal (23a) into the hole (35) in the rear mudguard (4).



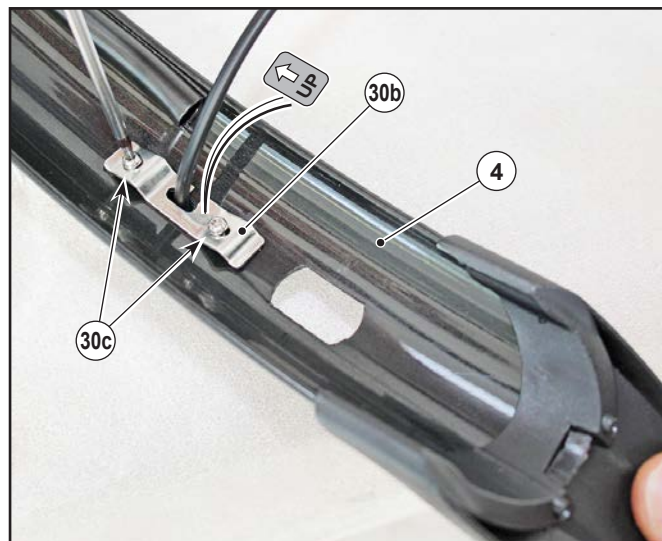
- Couple the light (23) correctly with the grommet (30a).



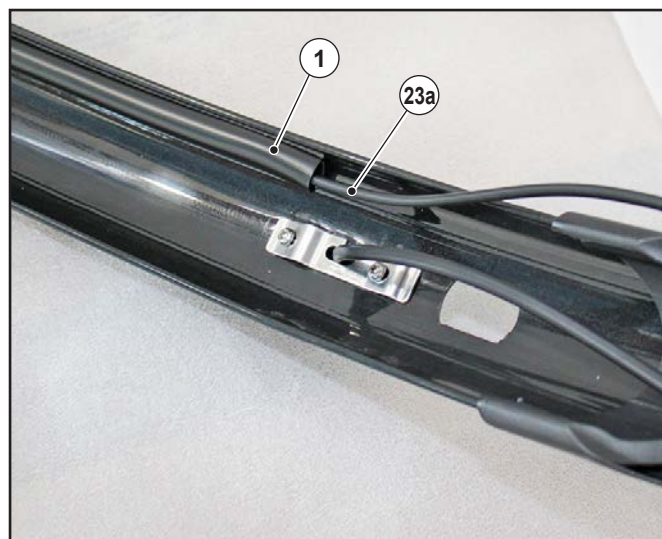
- Assemble the light assembly (23) plus grommet (30a) on the mudguard (4), checking that it is coupled correctly.



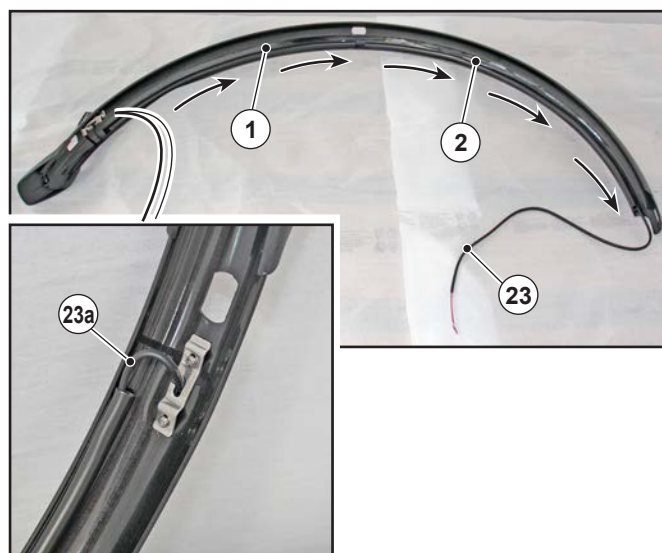
- Turn the mudguard (4) over and fix the light with the small plate (30b) and the screws (30c); make sure the plate is positioned with the arrow and wording (UP) facing upwards.



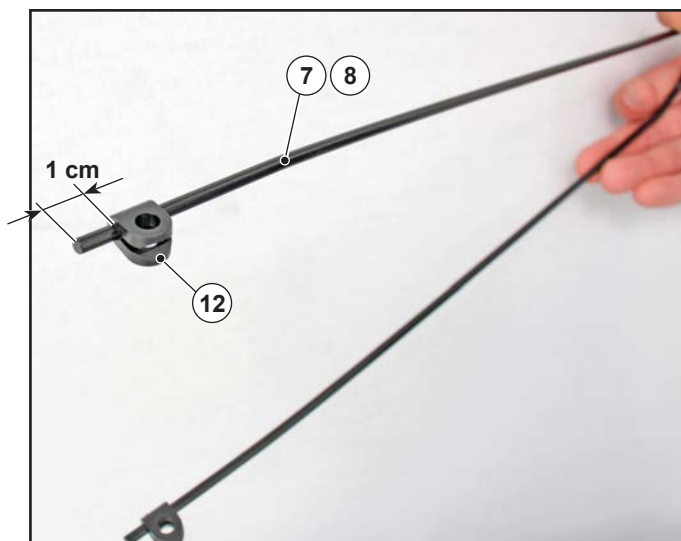
- Introduce the end (23a) into the sheath (1).



- Run with the cable (23a) from the sheath (1) to sheath (2) making sure that the cable that escapes from the light (23) is neither too loose or too taught.



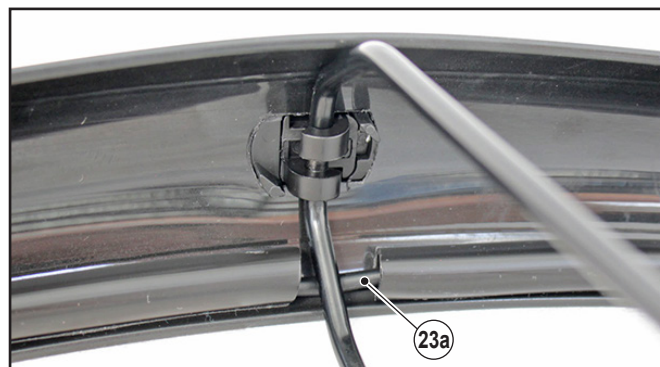
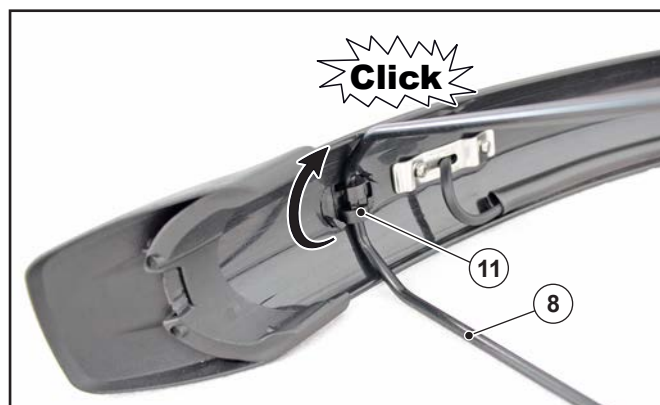
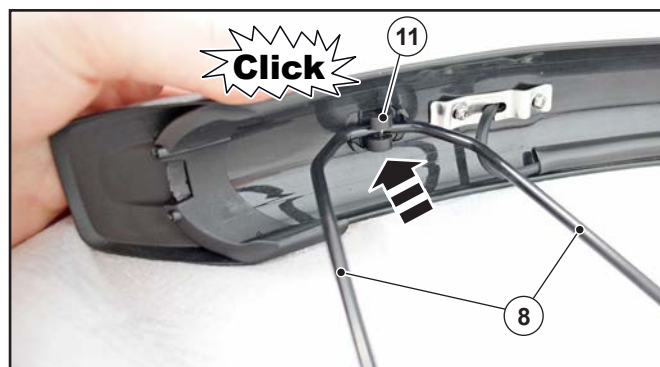
- Insert the small plates (12) into the rod supports (7) and (8) of the rear mudguard, so that the rod escapes by approx. 1 cm.



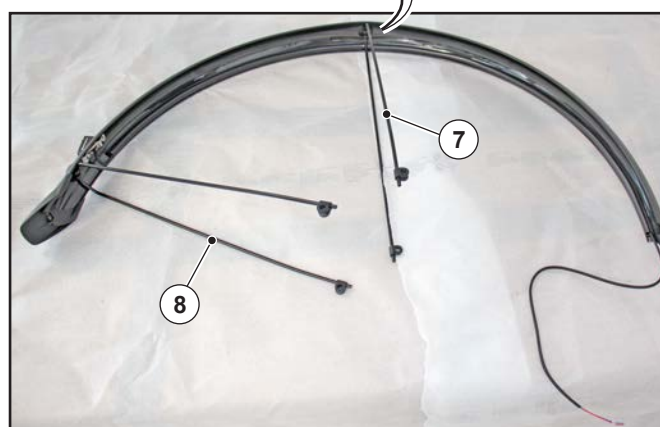
- Assemble the rod support retainer (11) onto the rear mudguard (4) (n° 2 pieces) positioning the logo so that it is legible and not upside-down.



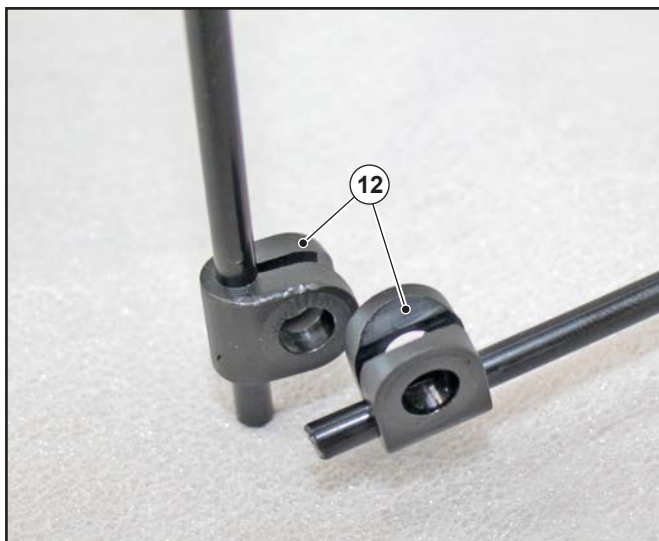
- Assemble the rod support (8) (short) on the retainer (11) and turn it clockwise to block it onto the mudguard.



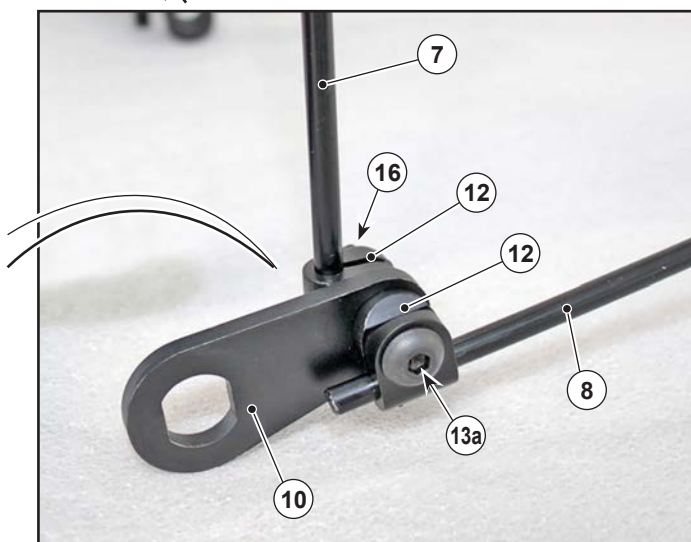
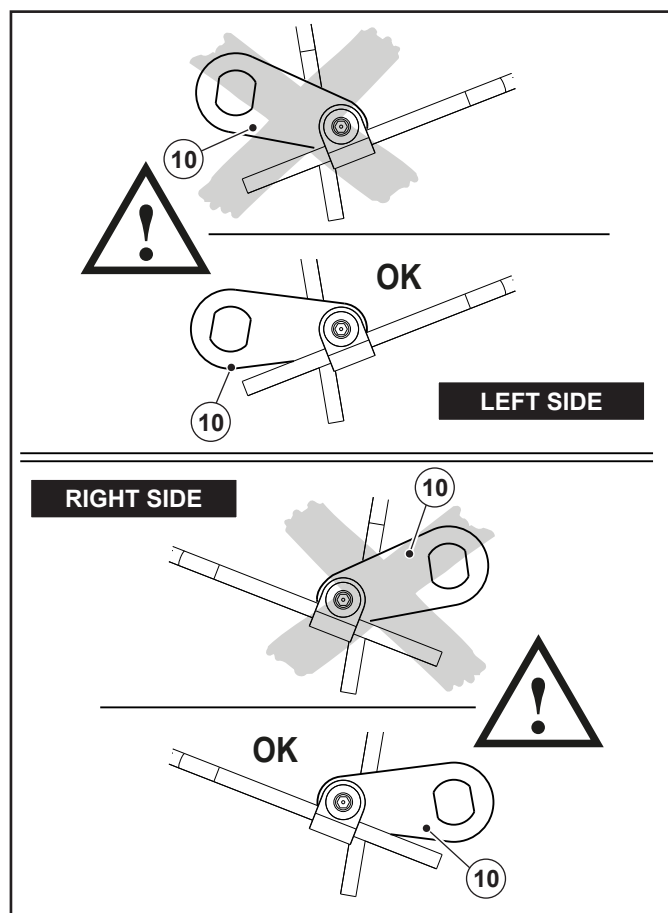
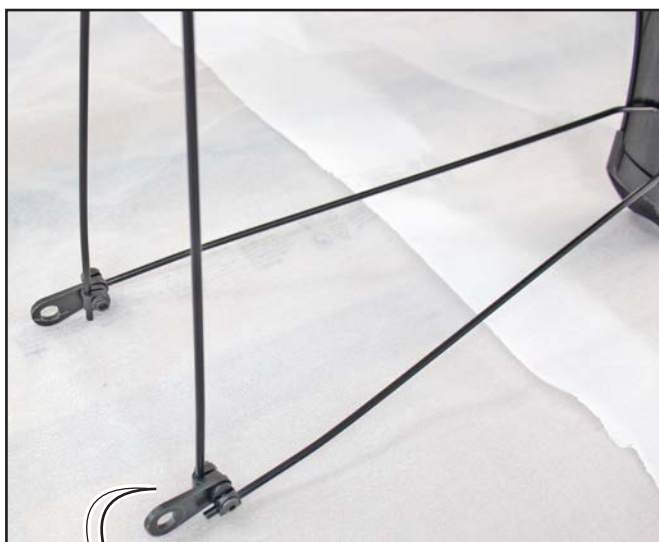
- Assemble the rod support (7) (long) operating in the same way as the support (8), paying attention not to pinch the cable (23a).



- Position the small plates (12) as in the figure.



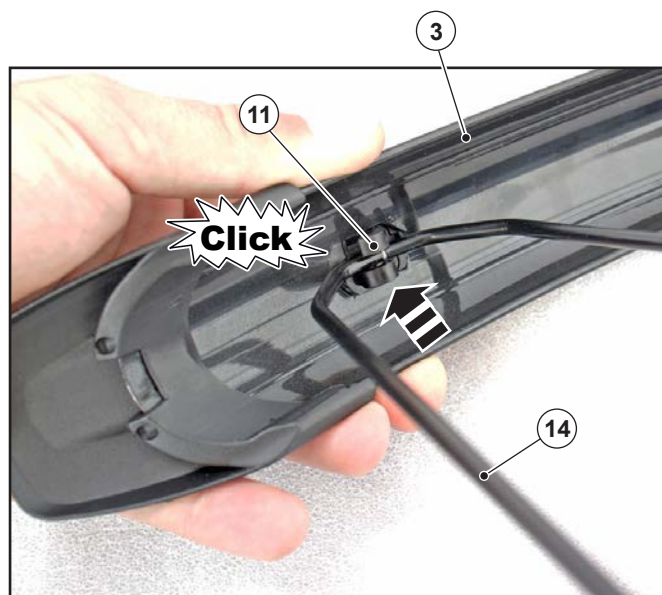
- Assemble the fixing plates (10), positioning them as in the figure. Use the screws (13a) and nuts (16) for assembly.
Screw in the screw (13a) without tightening.



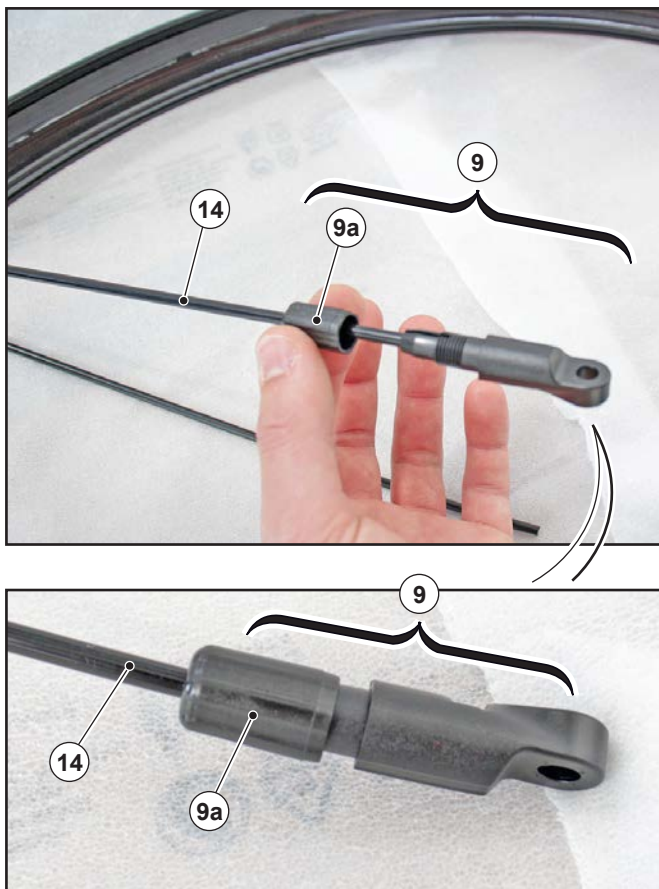
- Assemble the rod support retainer (11) onto the front mudguard (3) (n° 1 piece) positioning the logo so that it is legible and not upside-down.



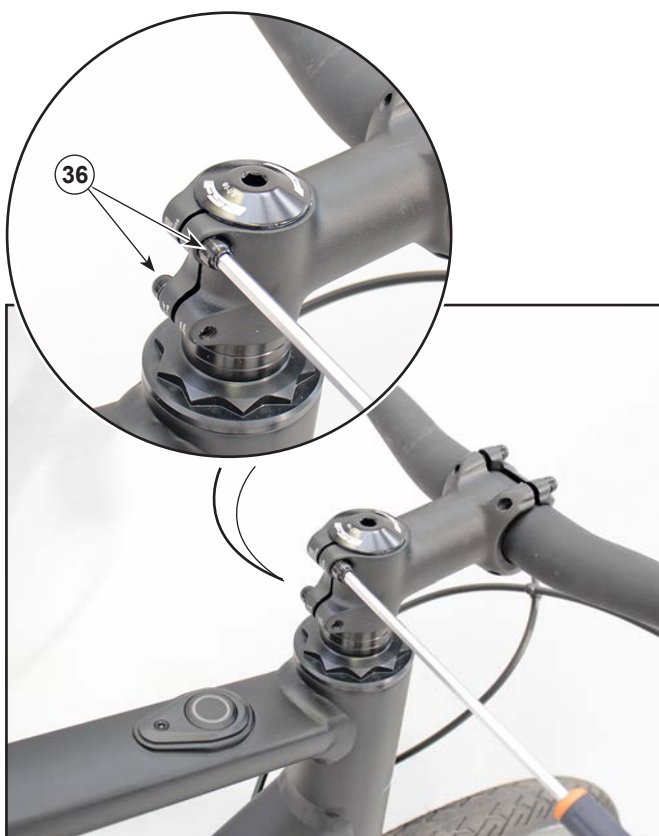
- Assemble the rod support (14) (short) on the retainer (11) and turn it clockwise to block it onto the mudguard (3).



- Assemble the adjustable support (9) on the rods (14) screwing on the threaded cover (9a) without tightening it.



- Loosen the screws (36) of the handlebar stem.



- Use a 5 mm Allen wrench to loosen the central pin (37) and remove it.



- Lift the handlebar (38) from the steering fork tube (39).



- Slide the spacers (40) out.



- Remove the cover (41) and the bearing seat (42).



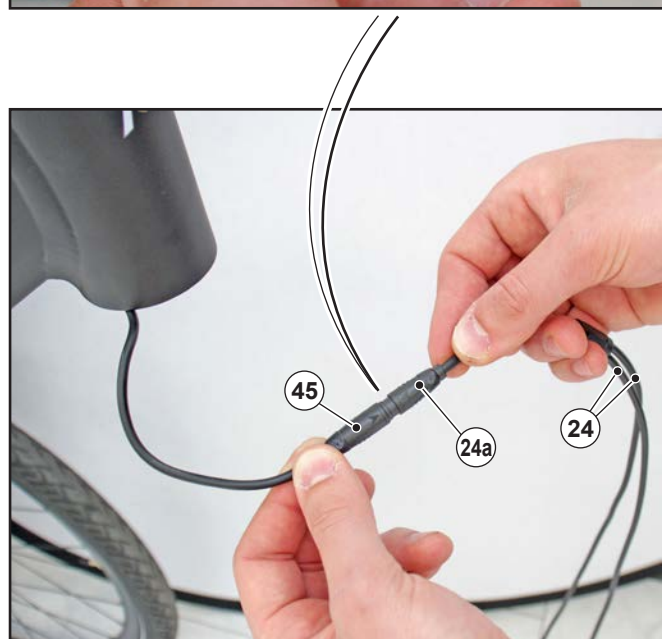
- Slide the fork (43) out complete with wheel.



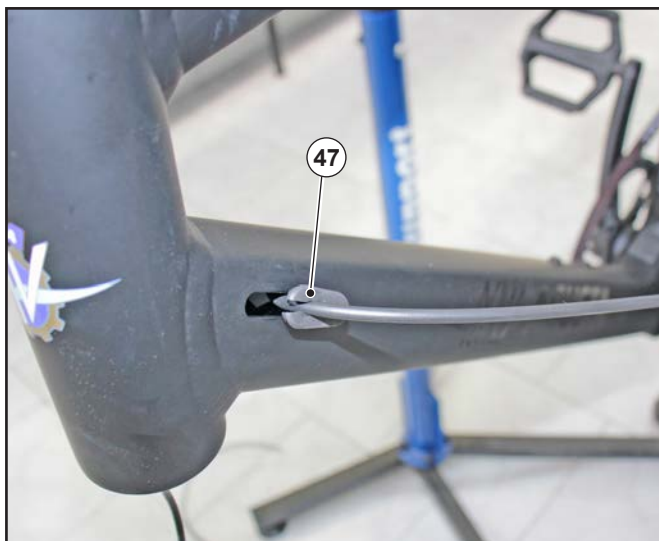
- Slide the set-up connector (45) from the handlebar steering tube (44) and remove the hood (46).



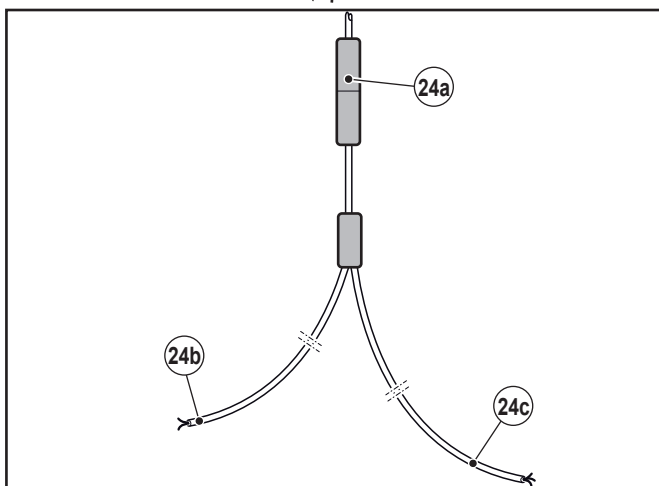
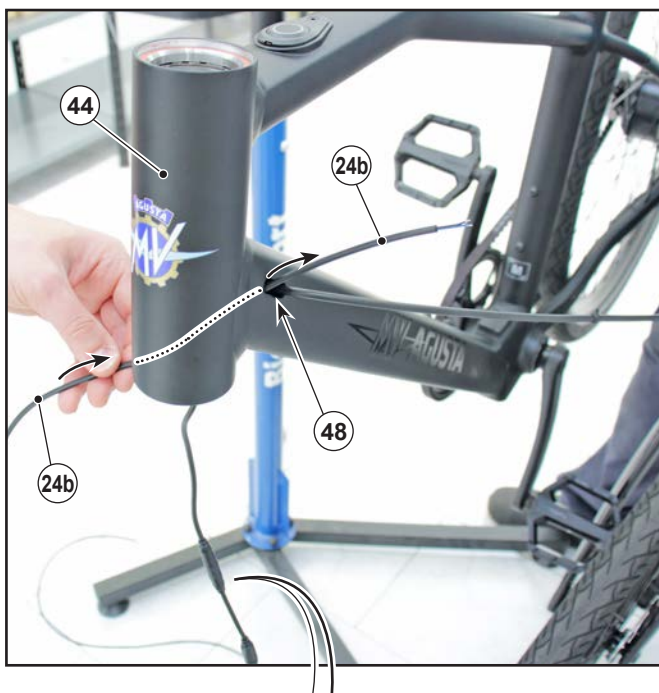
- Connect the connector (45) with connector (24a) of the extension (24) making sure the arrow is connected with the arrow stamped on the connectors themselves.



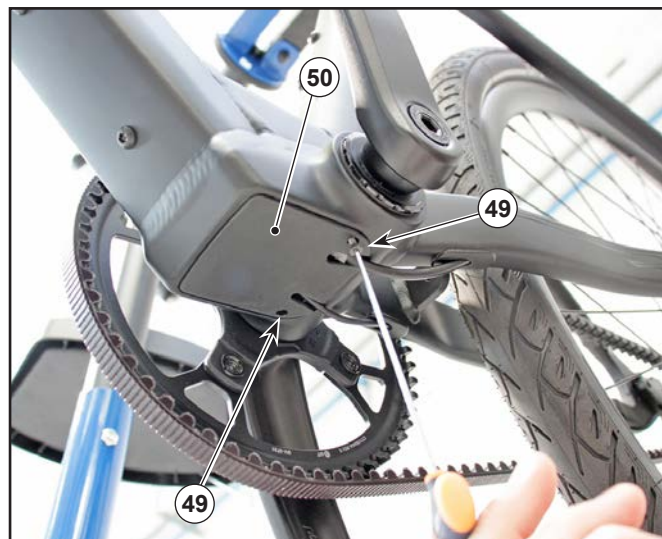
- Remove the grommet (47).



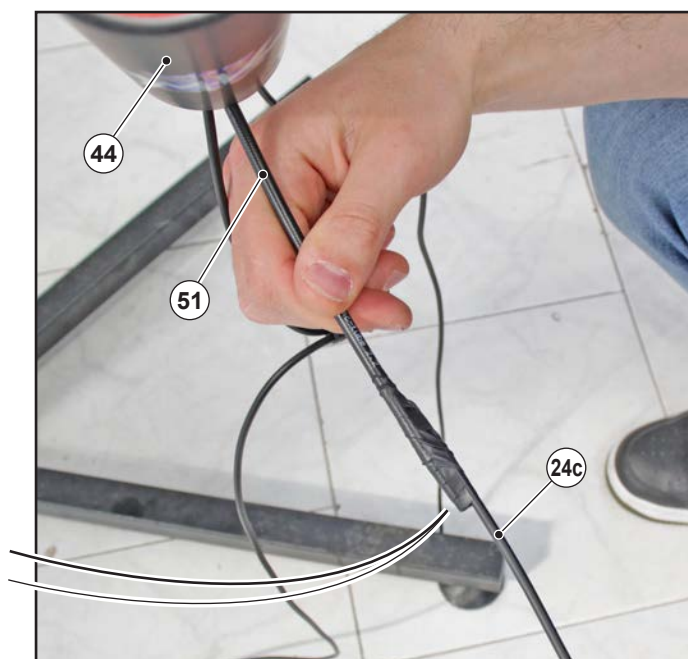
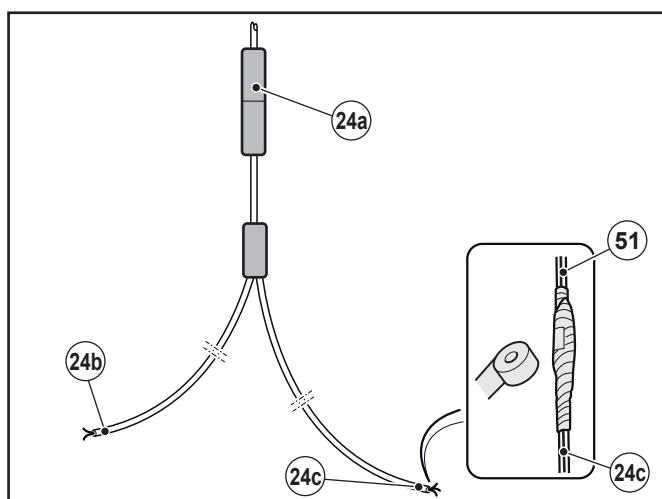
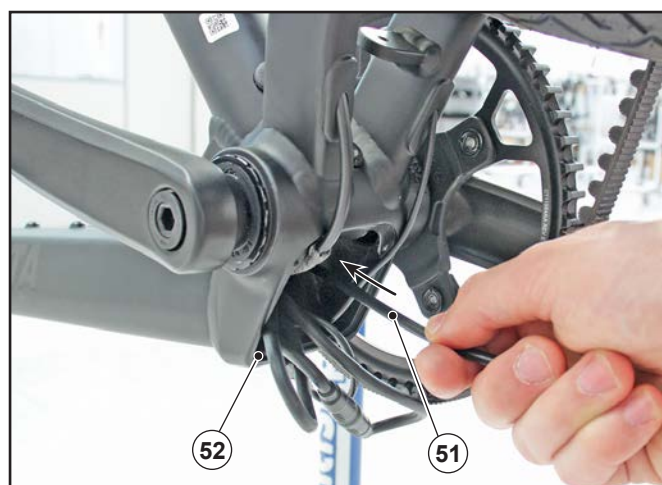
- Insert the end of the extension cable (24b) (short) inside the steering tube (44) and make it escape from the hole (48).



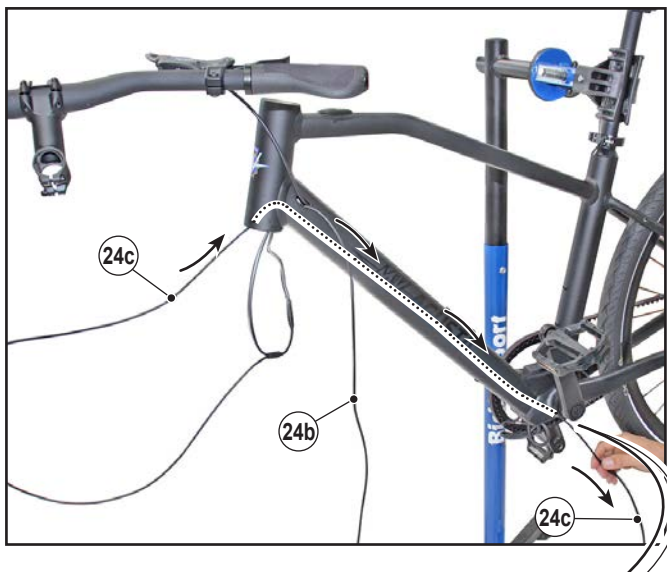
- Unscrew the screws (49) and remove the cover (50).



- Insert a probe (51) into the battery compartment (52) and make it exit from the steering tube (44), connect the end of the extension cable (24c) (long) using adhesive tape.



- Pull the probe (51) until the terminal is extracted (24c) from the battery compartment (52).



- Insert the electric cables inside the steering tube (44), inserting them inside the inclined tube (53) of the frame.



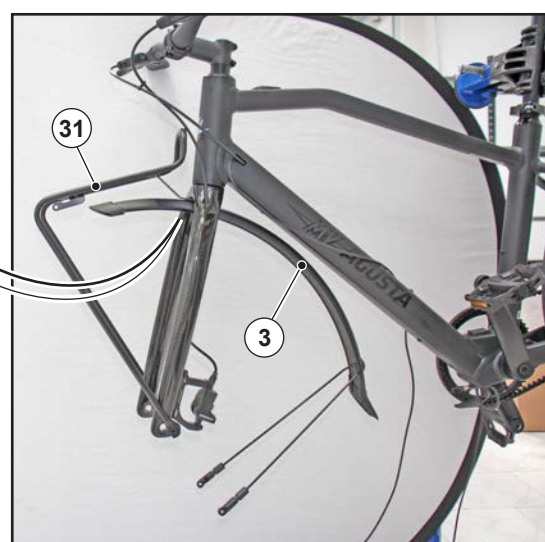
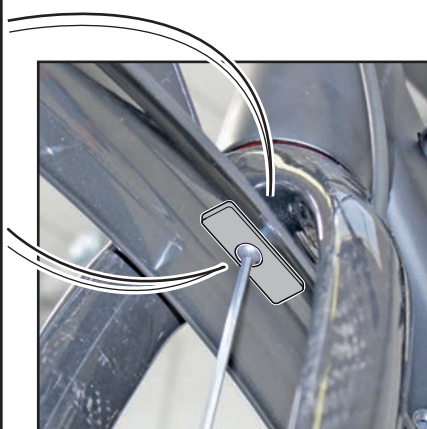
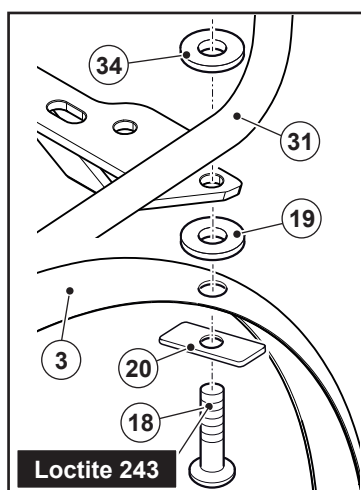
- Look inside the steering tube (44), it must be free with exception of the cable (54) that powers the control button.



- Re-assemble the fork (43) proceeding in reverse order to disassembly; see the indications printed on the components themselves for the coupling torques.



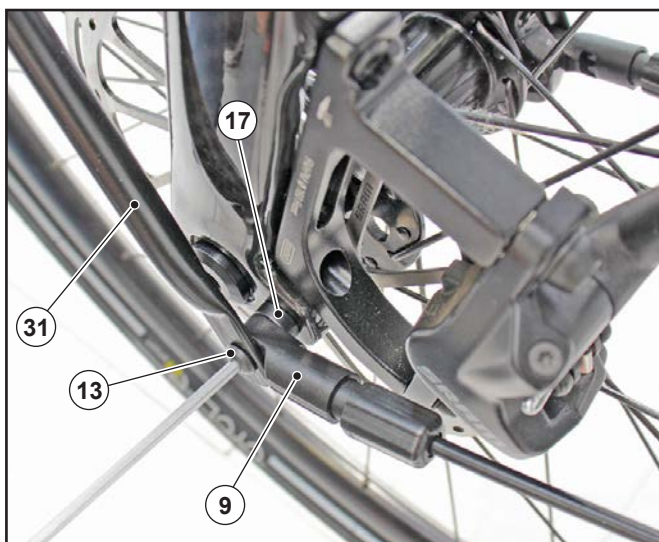
- Assemble the baggage holder (31) and the front mudguard (3), fixing them to the fork using the screw (18), the plate (20) and the Teflon washers (19) and (34).



- Re-assemble the wheel (55) tightening the pin (56) to 10 Nm (if previously removed).



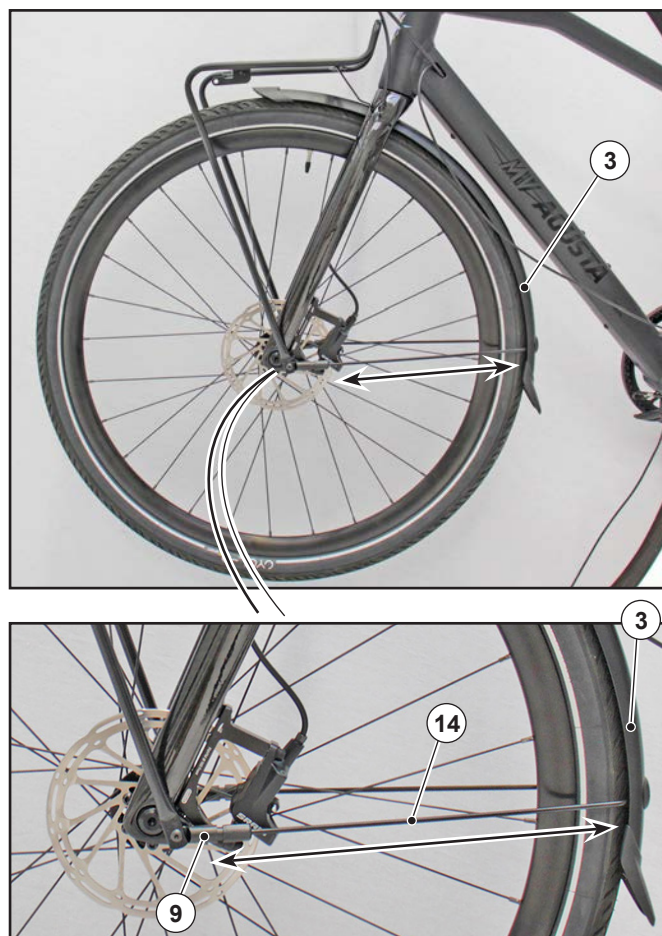
- Fix the baggage holder (31) on the left with the adjustable support (9) of the mudguard, placing the spacer (17) in between (17) and tightening the screw (13) (M5x25).



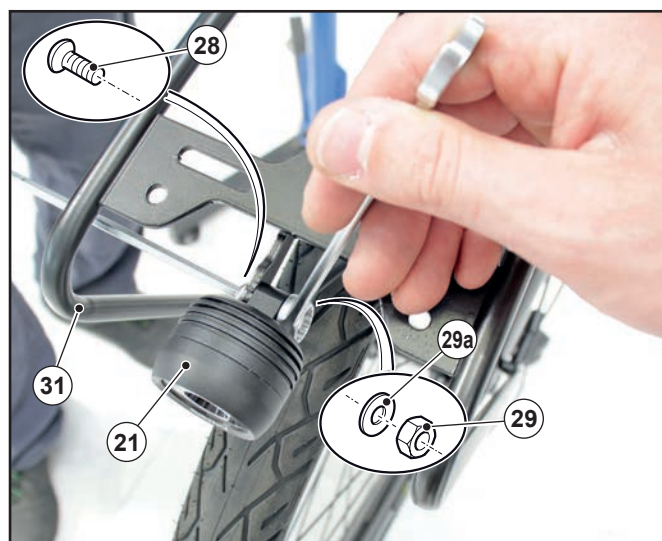
- Fix the baggage holder (31) on the right with the adjustable support (9) of the mudguard and tightening the screw (18).



- Adjust the distance of the mudguard (3) from the wheel by operating on the rods (14); once adjusted, tighten the supports (9).



- Assemble the bulb (21) on the baggage holder (31) using the screws (28), the nut (29) and the relative washer (29a).



- Connect the connector (21a) with the extension (22) connector (22a).



- Fix the extension cable (22) to the baggage holder (31) using the two rubber straps (25).



- Turn the handlebar and calculate the length of the cable (22) so that it is not too taught or too loose when the handlebar is turned.



- When the cable has been measured, lengthen by 5-6 cm and cut the cable (22).



- Allow the cable (24b) to escape by 5-6 cm from the hole (48) and then cut it.



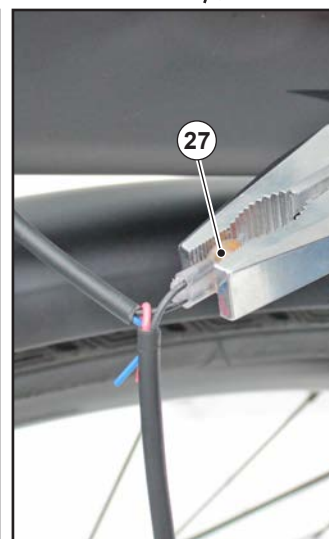
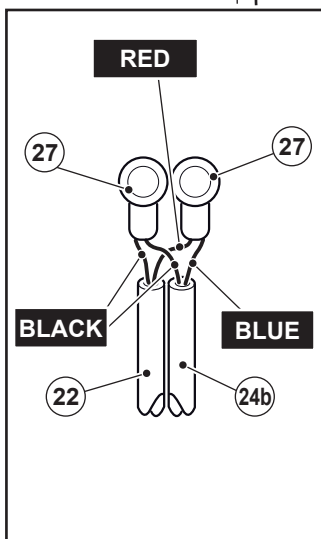
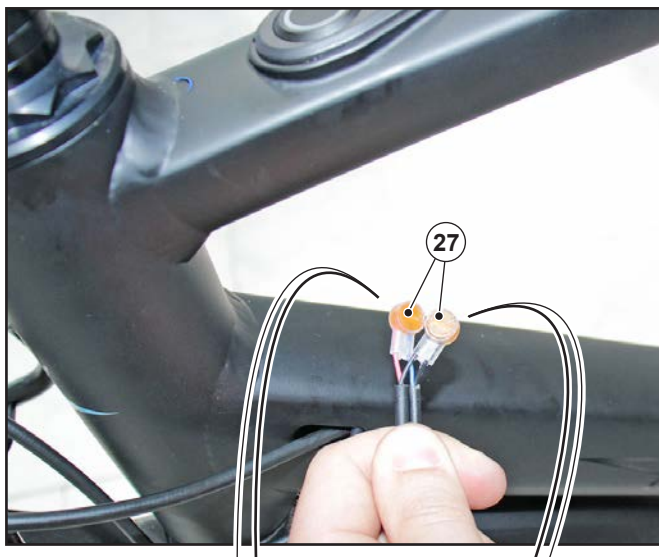
- Remove approx. 2.5 cm of sheath from the cables (22) and (24b).



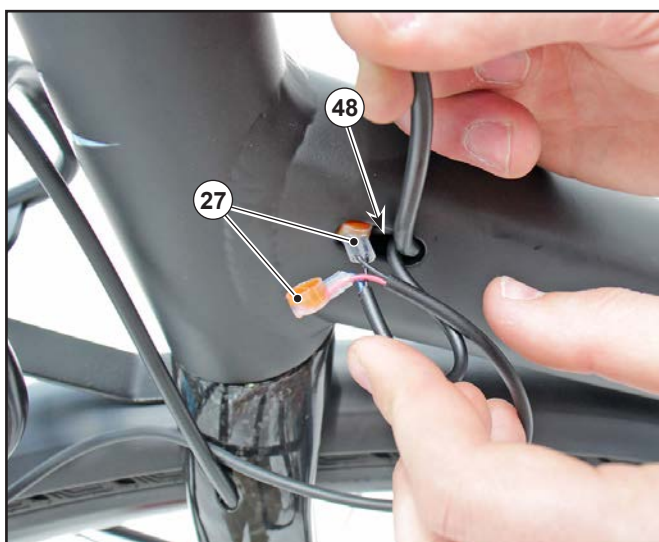
- Connect the two cables using terminals (27), connecting the wires as in the figure, and then press the terminals (27) using pliers.

IMPORTANT

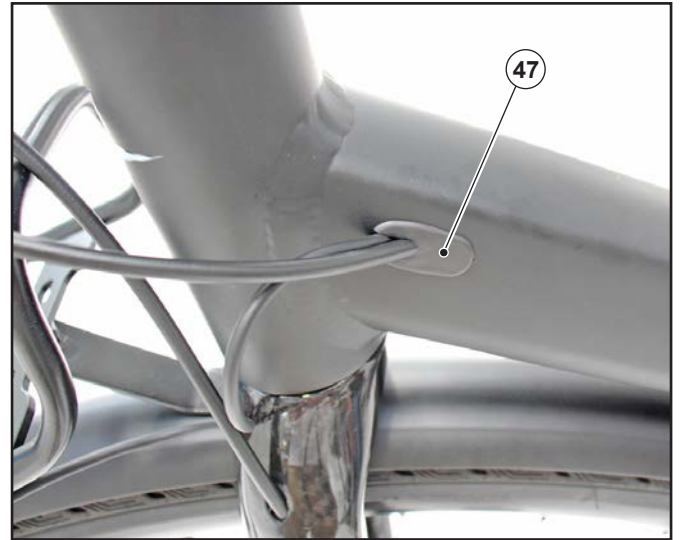
The electric wires that escape from the sheath of the cables (22) and (24b) must not be stripped but inserted integral into the terminals (27).



- Insert the two terminals (27) one at a time into the hole (48) of the frame inclined tube.



- Assemble the grommet (47).



- Assemble the rear mudguard (4) onto the bicycle.



- Loosen the nut (56) and remove it.



- Remove the spacer (57); the spacer must not be re-assembled since the plate (10) acts as the spacer.

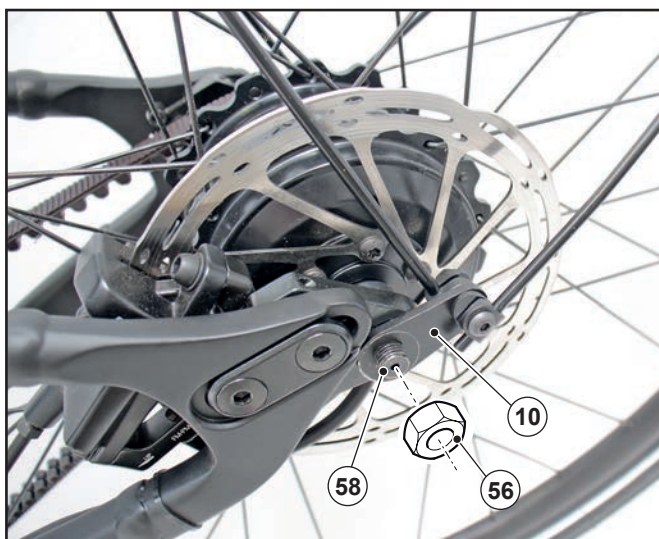
NOTE: do not throw the spacer (57) away but keep it in case the mudguard has to be removed.



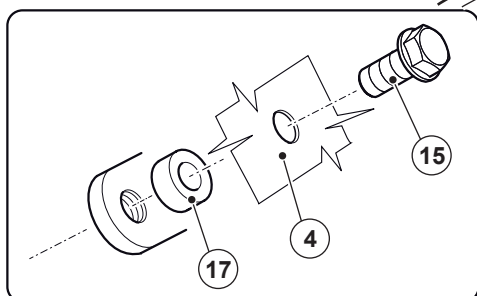
- Insert the plate (10) into the wheel pin (58) and then tighten the nut (56) with a torque of 23 Nm.
- Repeat the same operation from the opposite side of the wheel.

IMPORTANT

Do not loosen the two wheel nuts at the same time so as not to compromise belt tension.



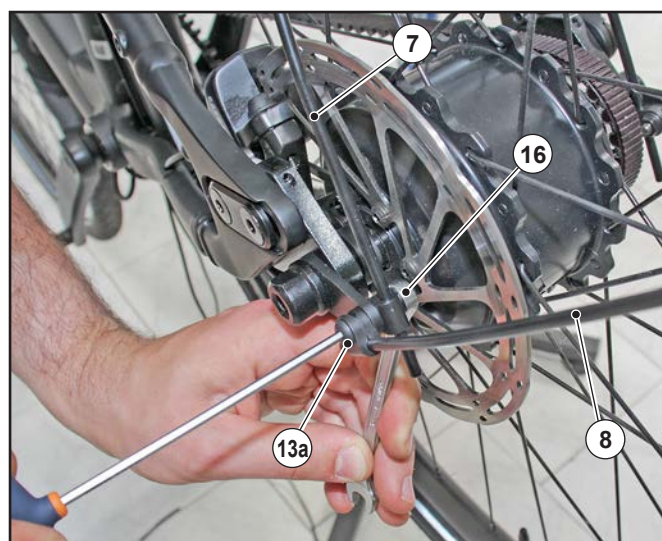
- Fix the mudguard (4) using the screw (15) and a spacer (17).



- Adjust positioning of the mudguard (4) so that it is equidistant from the rear tyre (59), operating on rods (7) and (8) from both sides.



- Fix the rods (7) and (8) from both sides, tightening onto the screw (13a) and the nut (16).



- Calculate the length of the rear light cable (23a).



- Cut the cable (23a) of the length established.



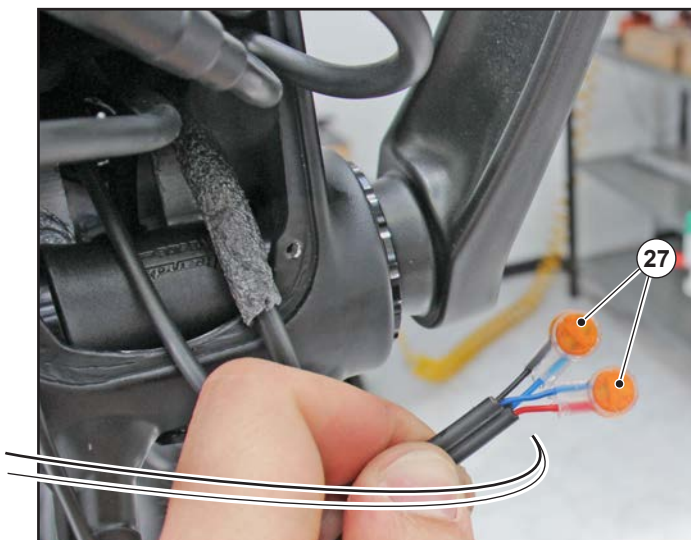
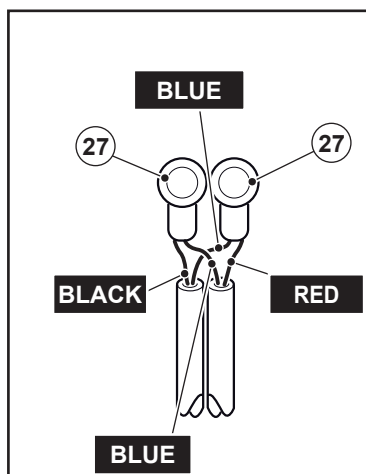
- Calculate the length of the cable (24c) and cut it.



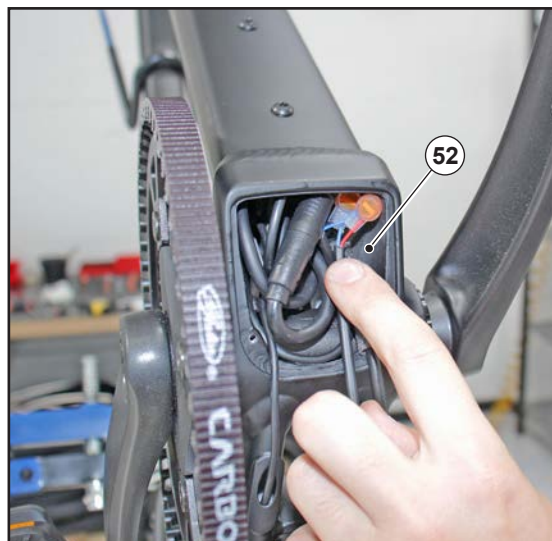
- Remove about 2.5 cm of sheath and assemble the connectors (27), connecting the wires as in the figure, and then press the terminals using pliers.

IMPORTANT

The electric wires that escape from the sheath of the cables (23a) and (24c) must not be stripped but inserted integral into the terminals (27).

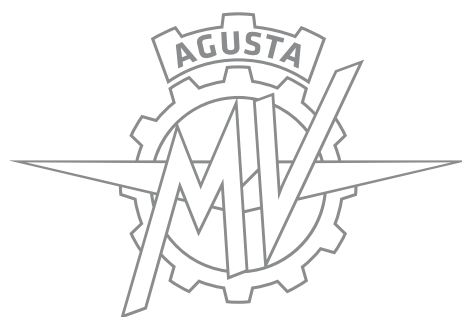


- Introduce the cable into the battery compartment (52).



- Re-assemble the cover (50) with the relative screws (49), making sure that the cables are passed inside the slots prepared.
- Turn the bike on and check the lights turn on correctly (see use and maintenance manual)





E- MOBILITY